



# ABS Engineering Corporation (Pvt.) Limited



# Company Profile

**ABS Engineering Corporation (Pvt.) Limited** is a specialized engineering company with a strong focus on complete mechanical works. Since its establishment in the year 1983, ABS Engineering Corporation (Pvt.) Limited is dealing in manufacturing of plants, machinery and equipment for **Oil & Gas, Fertilizer, Petrochemical, Ethanol, Power Generation, Cement, Chemical, Process, Manufacturing** and **Allied Industries**.

**ABS operates two well-equipped workshop facilities in Karachi, just 25 minutes from the seaport.** Spanning 7,100 sqm, the workshops feature full fabrication and machining capabilities, supported by overhead cranes (25, 15, and 10-ton capacities)., *These facilities are staffed by skilled technicians and manpower, working under the guidance of experienced management to ensure high-quality execution across all projects.*

*ABS provides complete turnkey plants on an Engineering, Procurement, and Construction (EPC) basis, in collaboration with world-renowned technology providers and engineering companies.*

ABS has proven capacity and expertise to deliver high quality engineering services and equipment built precisely as per customer's specification.

The combined facilities of both manufacturing units have capability to achieve production up to 10,000Tons/year, depending on the nature of work, by deploying approximately 1,400,000 to 1,500,000 man-hours/300 days (based on double shift working). On the basis of scope of work, ABS has seven divisions.

1. Coded Equipment Division
2. Process Equipment Division
3. Rotary Machines Division
4. Steel Structure Division
5. Field Services (Site Fabrication)
6. Erection and Construction Division
7. Refurbishment and Maintenance



*ABS is a PEC-certified Category CB licensed constructor and ISO 9001:2015 certified company. It has implemented an Integrated Management System based on ISO 14001:2015 (Environmental) and ISO 45001:2018 (Occupational Health & Safety), covering the company's health, safety, and environmental aspects.*

## HEALTH, SAFETY & ENVIRONMENTAL POLICY

**ABS Engineering Corporation (Pvt.) Limited** is committed to providing Engineering and Manufacturing Services by meeting all applicable requirements and providing a safe and healthy workplace for employees, Contractors, Customers and Members of the Public. In doing so, **ABS Engineering Corporation (Pvt.) Limited** complies with all relevant Regulatory Requirements, Codes of Practice and Standards.

Our commitment to Quality, Health, Safety and the Environment includes:

- Safeguarding the health of our employees, clients and contractor personnel and the public.
- The provision of safe working practices.
- A safe working environment.
- Prevention of pollution.
- Establishing safeguards against all identified risks.
- Protect environment.
- Evaluating audit results, analysing the cause of non-conformance and evaluating the effectiveness of corrective actions.
- Perform systematic hazard identification and risk management of its operations and facilities.

**ABS Engineering Corporation (Pvt.) Limited** is committed to provide engineering and manufacturing services, which meet customer requirements in a highly regulated environment with strict safety standards to ensure continuous improvement and effectiveness of the Integrated Management System.

# Coded Equipment

*ABS Engineering Corporation (Pvt.) Limited* specializes in manufacturing coded equipment especially for Oil & Gas, Ethanol, Fertilizer and Petrochemical industries.

The main products are **Pressure Vessels, Knock-out Drums, Steam Drums, Steam Saturation Drums, Boiler Feed Water Tanks, Deaerator Tanks, Heat Exchangers, Reactors, Columns, Furnaces, Pressure Piping, Air Coolers, Shop Fabricated Piping / Spools, Shop-Fabricated Steel Structures** etc.

ABS's workshop facilities and skilled engineers are well-equipped to fabricate all types of mechanical coded equipment.

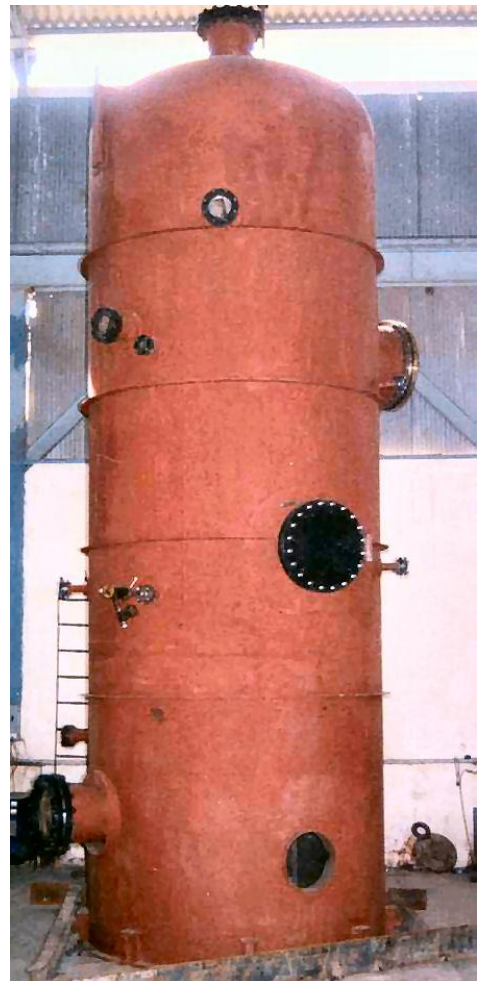
In order to fulfill the technical requirements, the company specifically emphasizes on quality control in accordance with relevant codes and standards.

For manufacturing and quality control of the coded equipment, codes such as **ASME (Sec. II; Sec. V; Sec. VIII-Div 1, 2; Sec. IX), BS 5500, API 661, API 650 and ANSI B 31.4,31.4** are complied and followed.

The quality of the equipment is assured during the manufacturing with help of stage-wise inspections.



LPG Bullet



Steam Saturation Drum

# Coded Equipment



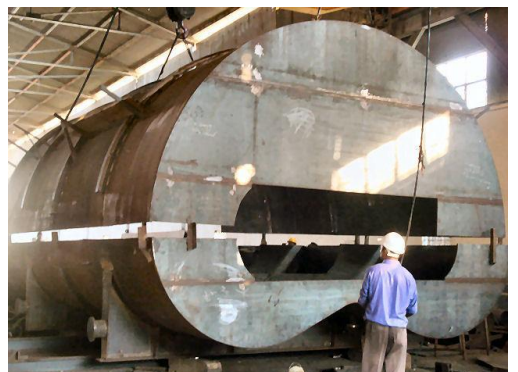
Shell & Tube Type Heat Exchanger



Oxychlor Reactor



Air Coolers for Oil Refinery



Continuous Pan

# Process Equipment

ABS Engineering Corporation (Pvt.) Limited specializes in fabrication of equipment for process manufacturing industries. Equipment are manufactured for various unit operations and unit processes such as **Heat Exchanging, Evaporation, Reaction, Boiling, Cooling, Crystallization, Separation, Filtration, Condensation and Drying**, etc. for the **Process and Allied Manufacturing Industries**.

The main products are:

Evaporators	Heat Exchangers	Crushers
Vacuum Filters	Pressure Filters	Crystallisers
Vapour Cells	Gas Scrubbers	Multi Trays Clarifiers
Vacuum Pans	Cascade Condensers	Rotary Dryers
Rain & Shower Type Condensers		Fluid Bed Dryers
Falling Film Evaporators		Counter Flow Dryers
Shop Fabricated Low Pressure Piping Spools		

ABS has served and capable to cater following **Process** and **Manufacturing industries**.

1. Ethanol Plant
2. Bio Gas Plants
3. Steel Industry
4. Cement Industries
5. Sugar Industries
6. Glass Industries
7. Urea Formaldehyde Plants
8. Water treatment Plants
9. Soap & Detergents Plants
10. Pharmaceutical Industries
11. Food Industries
12. Chipboard Plants
13. Medium Density Fiber Board Plants
14. Effluent (Environmental) Treatment Plants



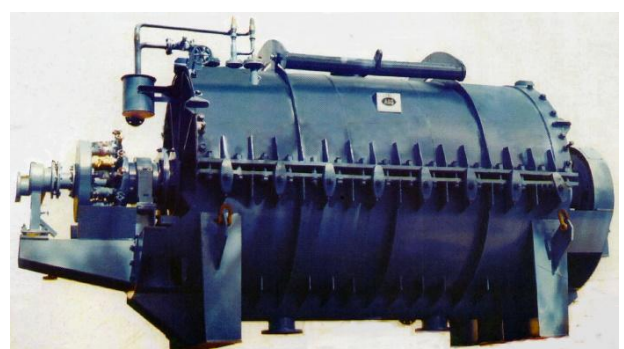
Falling Film Evaporator



Shell & Tube Type Evaporator



Vacuum Pan



Pressure Filter

# Process Equipment



Hammer Crusher



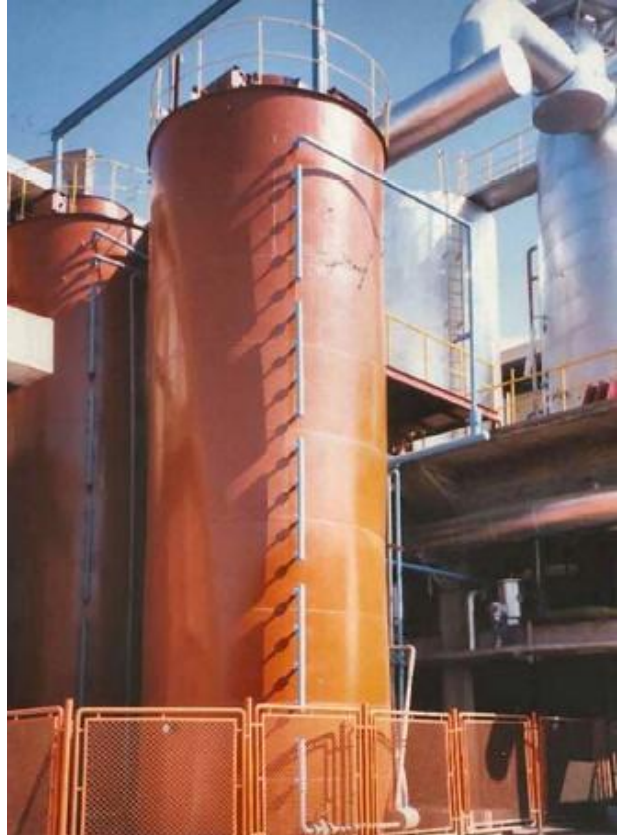
Horizontal Crystallizer



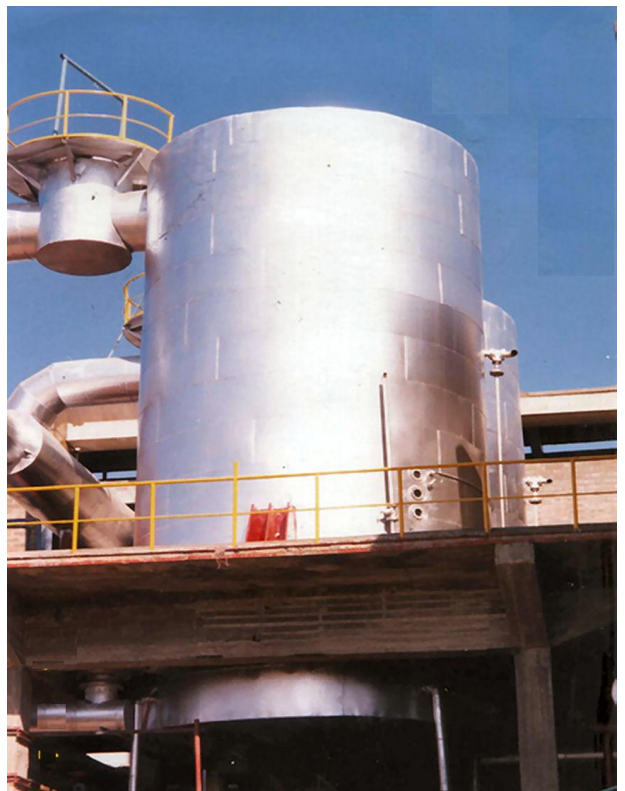
Vacuum Filter



Rotary Screen



Vertical Crystallizer



Evaporator

# Piping

ABS Engineering Corporation (Pvt.) Limited can manufacture and fabricate all sizes, types, schedules, materials, and configurations of pre-designed pipes including bending to create curvatures to any angle, as per client's pre-approved designs.

Our Specialty are as:

- *Process and Product Piping* (high & low pressure)
- *Cross Country Pipelines* for oil, gas and water.

- Construction, erection, installation, testing and commissioning of fuel loading facilities through loading arms.
- *Pumping Station* for jet fuel, oil, water and other fuel transfer facilities

## Interconnecting Plant and Cross-Country Piping

ABS has extensive experience of piping works in Carbon Steel, Stainless Steel and Alloy Steel.



Cross Country Pipeline



Fabrication of Piping Spool

# Piping



Process Piping



Interconnecting Plant Piping

# Tanks

Regardless of the location, ABS Engineering Corporation (Pvt.) Limited is fully equipped to perform both shop fabrication and on-site fabrication or construction of tanks and tank farms. By pre-fabricating tank structures and plates in its workshop, ABS significantly reduces overall project timelines while ensuring precision and quality in tank construction.

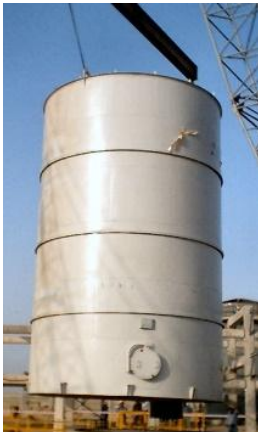
ABS provides skid-mounted tanks fabricated in its workshop with pumps, gauges, vents, nozzles, and related piping.

To provide one-window service ABS while pre-fabricating tank plates and structure also performs surface treatment and painting jobs, which eliminates sandblasting job at client's site. Therefore, minimizing environmental issues for our clients on site.

Tank Farm



Tank Farm



Shop Fabricated  
Storage Tank



Degassing Tank  
for Biogas Plant



Biogas Digester Tank

# Steel Structures

ABS Engineering Corporation (Pvt.) Limited specializes in both shop and field fabrication and erection of steel structure works such as

- **Steel Structure for Platforms**
- **Pipe Racks**
- **Buildings**
- **Self-supporting and Lattice Type Masts & Towers,**
- **Gantries,**
- **Steel Piles Casing for following industries:**

Oil & Gas Fields	Oil Refineries and Terminals	Fertilizer Industries
Cement Plants	Sugar Mills	Flood Light Masts
Lattice Type Towers	Jetties and Terminals	Industrial Sheds
Multistoried Residential and Commercial Buildings, constructed with Steel Structure		

Specialized resources are available for shop detailing of fabrication drawings, fabrication, surface preparation & painting, shop fit-up trial assembly and erection of steel structures.

Beside capabilities for the fabrication of usual Rolled Sections, ABS Engineering Corporation (Pvt.) Limited is also capable for fabrication of large sized sections by plate fabrication of built-up Sections required for **Pre-heater Tower** of a **Cement Plant** and **Complete Supporting Structure** of a **Sugar Mill**. For such purpose, company has expertise to control the *Thermal Distortion* of plate fabricated built-up sections.

Special arrangement of base plates and workspace are available under the overhead crane area, for the trial shop fit-up assembly of Steel Structure.

*Sandblasting Booth* equipped with dust collector for sand blasting and covered enclosure are available for the paint application by *Airless Spray*, for the shop painting of steel structures.



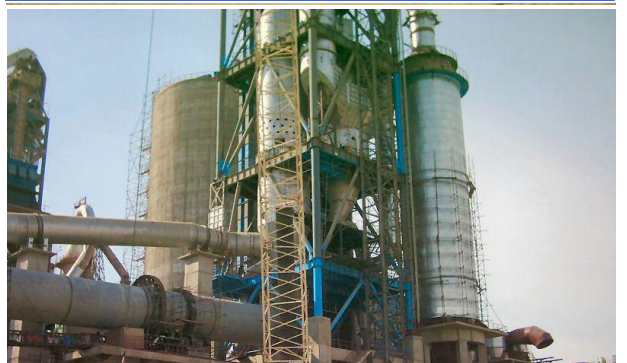
Steel Structure for Gas Gathering Plant



Steel Structure - Trial Assembly



Steel Structure - DRI Furnace (Steel Mills)



Steel Structure – Pre-Heater Tower (Cement Plant)



Steel Structure – Complete Plant

# Complete Plant Installation

*ABS Engineering Corporation (Pvt.) Limited has capabilities to take up complete mechanical projects/ plants on turn-key basis.*

Our Primary customers are processing, refining, handling, manufacturing or treating petrochemicals, food products, water, waste, bulk materials, minerals and products manufactured for the use of various other processes.

ABS has vast experience and expertise ranging from shop drawings and shop fabrication to complete installation and interconnecting plant piping.



Distillation Pumps



## Ethanol Plant

Ethanol Plant



Fermenters



Distillation Columns



Molasses Tanks

# Complete Plant Installation



Roof Truss over Fermenter House



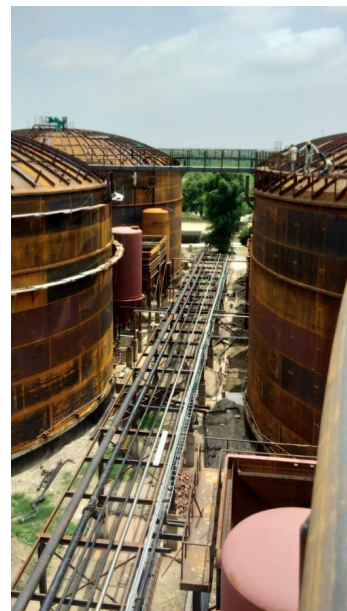
Distillation Column



Biogas Digester Tanks



Gas Holder Tank



Degassing Tanks, Lamellar Separators

# Complete Plant Installation



Complete Mechanical works of Ethanol Plant



Lamella Clarifier



Degasser



Molasses Storage Tanks



Alcohol Storage tanks

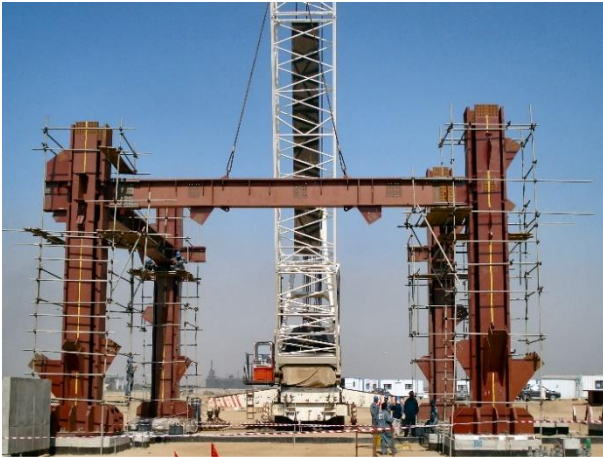
# Complete Plant Installation



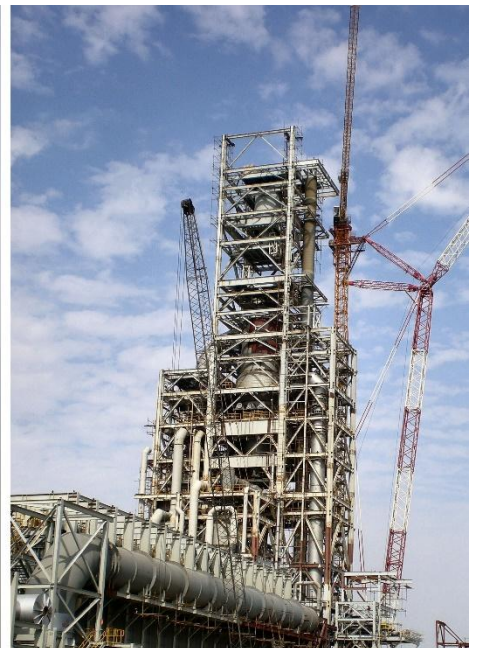
Steel Mills



DRI Pipe Racking



Erection of Steel Structure for DRI Furnace



Erection of DRI Tower

# Complete Plant Installation



## Cement Plant

Cement Plant



Silos



Pre-Heater Tower – Fabrication and Installation



Kiln Shell – Installation



Cyclone



Bottom Cone (Conditioning Tower) – Installation



Clinker Storage Silos

# Complete Plant Installation



Klinker Storage Shed

Klinker Storage Shed

# Shop Fabrication and Machining Work

ABS Engineering Corporation (Pvt.) Limited has two well-equipped workshops producing high quality fabrication for all manufacturing divisions of the company.

ABS is capable in fabricating and manufacturing of various mechanical and steel products including steel structures, coded equipment, process equipment, assemblies and other engineering solutions.

## ROTARY MACHINES

ABS is specialized in the manufacturing of Rotary machines and is equipped with heavy and precise machines required for the fabrication, machining and assembly of Rotary machines and equipment, such as:

Heavy duty hammer crushers	Levellers	Fan / Blowers
Rotary knives cutters	Graders	Mixers
Rotary screens	Elevators	Conveyors
Levellers and other rotary machines	Centrifugal separation machines	
Heavy duty roller crushers	Sieve Separators	

## DYNAMIC BALANCING SERVICES

To fulfil the essential requirement of *Dynamic Balancing* of Rotary parts, ABS has a computerized dynamic balancing machine, having balancing range as below:

- DYNAMIC BALANCING MACHINE:  
 $\varnothing$ 2,400 mm x length 3,000 mm x 1 Ton



## SPECIAL MACHINING ARRANGEMENTS

To fulfil the versatile machining requirements, ABS Engineering Corporation (Pvt.) Limited has a few "Special Large Size Machines" to undertake the heavy and large size machining jobs.

**Horizontal Boring Machine**  
**(14,000 mm x 4,000 mm x 1,500 mm)**

The machine is suitable for facing and boring of a job.

**Travel = 14,000 mm**      **Boring length = 1,500 mm**  
**Height = 4,000 mm**      **(Horizontally deep)**



Dynamic Balancing Machine



Flat Bed Planner



# Shop Fabrication and Machining Work

Horizontal Lathe Machine

( $\varnothing$  1,500 mm x 9,000 mm)

This machine is suitable for the turning and facing.

Diameter =  $\varnothing$  1,500 mm  
Length = 9,000 mm



Vertical Lathe Machine

( $\varnothing$  5,000 mm X 2,300 mm)

For the turning, Facing and boring a work piece.

Diameter =  $\varnothing$  4200 mm  
Height = 2,200 mm



Radial Drill Machine

(14,000 mm x 4,000 mm x 1,500 mm)

The machine is suitable for facing and boring of a job.

Quantity = 15  
Capacity: Hole Dia = 10mm ~ 40mm  
Arm Length = 1200mm ~ 1800mm



Plate Shearing Machine



Submerged Arc Welding



Rolling Machine

Maximum Capacity for rolling plates up to 4,000mm (Width) X 40mm (Thickness)

No. of Machines = 4



Besides well-equipped workshops and sizeable fixed installations, *ABS Engineering Corporation (Pvt.) Limited* has a skilled team who is capable of handling on-site fabrication and mechanical erection works.

Site works include **on-site fabrication** and **erection of distillation columns and storage tanks of various sizes, piping, steel structures, insulation, surface preparation & painting, heavy rigging and lifting, installation, alignment** and commissioning of **complete plants and machinery**, delivered in one piece or in knock-down condition.

Workforce of *ABS Engineering Corporation (Pvt.) Limited* is equipped with proper tools, plants and mobile equipment, such as

- Mobile cranes heavy handling equipment.
- Mobile power generators.
- Mobile welding plants and accessories.
- On-site *Post Welds Heat Treatment (PWHT)* arrangement.
- On-site gas cutting machines including *Plasma Cutters* and *Semi-Automatic Cutters*.
- *Skid Mounted Machines*, such as lathes, boring machines, drilling machine, plates bending rollers, etc.
- Rigging tools and equipment.
- Portable hand tools (electric / pneumatic) such as drilling machines, grinding machines, cutting machines, chipping machines etc.
- Skid mounted offices and mobile accommodations.
- Surface preparation (blasting) and coating equipment.
- Erection, testing and commissioning jigs & fixtures.

*ABS Engineering Corporation (Pvt.) Limited* has successfully completed following on-site projects.

- Installation of Pakistan's only DRI (Steel Plant)
- Fabrication and Installation of Cement Line
- Tank farms and onsite tank fabrication
- Complete Installation of Ethanol Plants
- Construction of Tanks, Piping and Structure for Oil Storage Terminals
- Steel Piles welding and Jetty Structure for a Jetty and Oil Terminal
- Expansion and B.M.R. Projects for Sugar Mills
- Cross-country Pipeline
- Complete installation and modernization of Glass furnace

### On-Site Fabrication



On-Site Steel Structure Fabrication & Erection



On-Site Tank Fabrication



On-Site Fabrication Yard

# Heavy & High Lifting and Installation

ABS performs comprehensive rigging studies for heavy and high-elevation lifts using CAD softwares, generating detailed lift plans and rigging drawings for every critical lift across the plant.

ABS has experienced and skilled rigging crew who has carried out heavy lifts up to 110m heights using cranes of 600tons capacity .



# Company Profile

## Major Clients

UNIGOL

LOTTE CHEMICAL  
PAKISTAN LTD

engro polymer  
& chemicals

LUCKY

CLOUGH

ATTOCK CEMENT  
PAKISTAN LIMITED

TSM  
TUWAIQI STEEL MILLS

Ghulam Faruque  
Group

CENTURY PAPER & BOARD  
MILLS LIMITED

SIEMENS

byco

PSO  
PAKISTAN STATE OIL

PPL

National Refinery Limited

HSM

CHERAT  
CEMENT

JDW  
JDW Group

RYK  
Mills Limited



## Location - Workshop

F-492, SITE, Karachi - 75700, Pakistan

Tel: +(92-21) 32579174, 32579818

FAX: +(92-21) 32567745

Mobile (PABX): 0300-2010993

E-mail: [info@absengineering.com](mailto:info@absengineering.com)

Website: [www.absengineering.com](http://www.absengineering.com)

