



## ABS Engineering Corporation (Pvt.) Limited



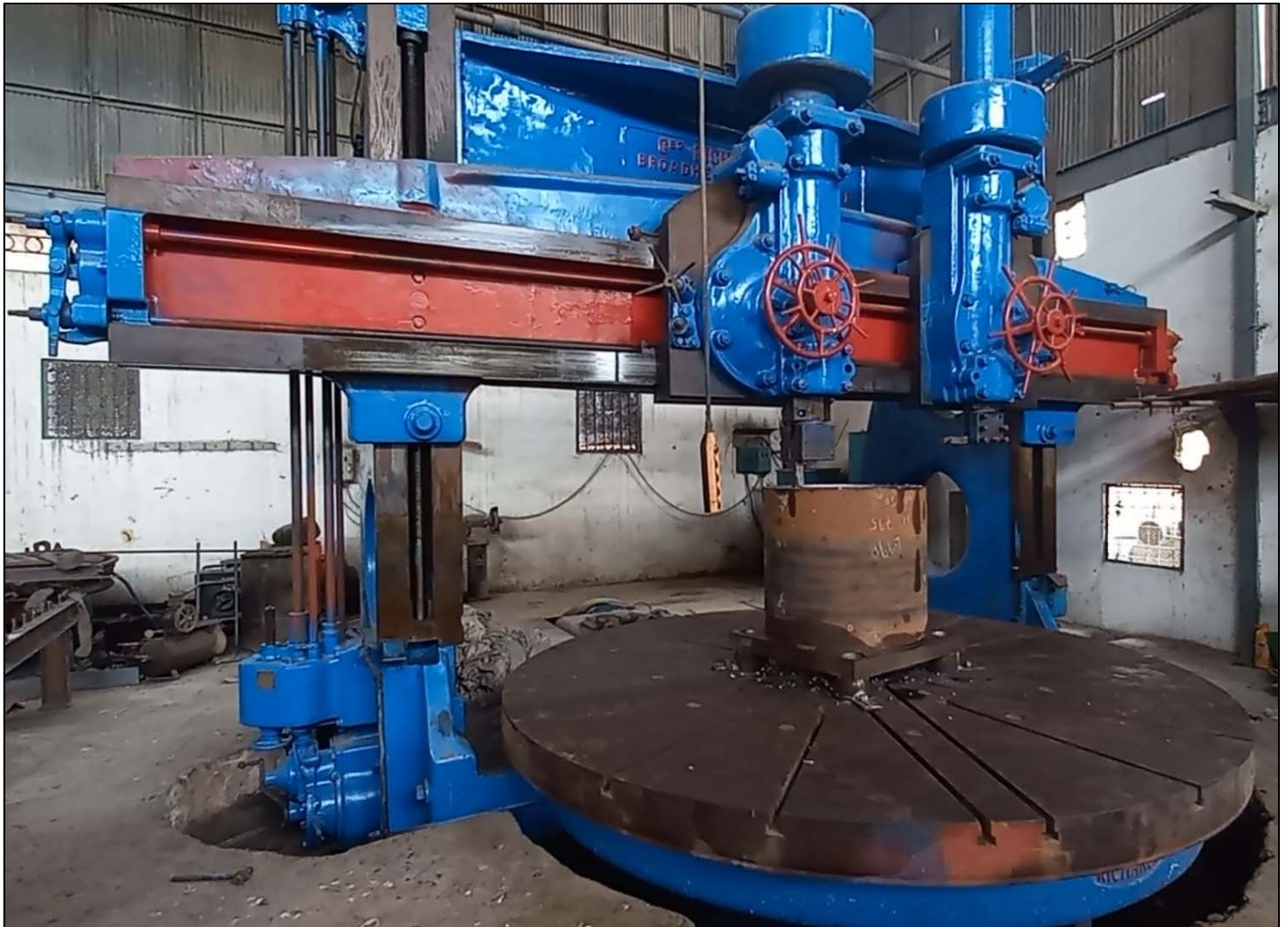
# Machining Works

## Vertical Lathe Machine

For the turning, Facing and boring a work piece.

**Diameter** =  $\varnothing$  4200 mm

**Height** = 2,200 mm



# Machining Works

## Horizontal Lath Machine

**SWING Ø 1470 MM X 9200 MM LONG.**

**SWING Ø 330 MM X 2750 MM LONG.**

**SWING Ø 230 MM X 1525 MM LONG.**

**SWING Ø 127 MM X 500 MM LONG.**

**SWING Ø 325 MM X 3000 MM LONG.**

**SWING Ø 610 MM X 3000 MM LONG.**

For Shaft turning work piece.



# Machining Works

## Horizontal Lathe Machine



This machine is suitable for the turning and facing.

**Diameter =  $\varnothing$  1,500 mm**

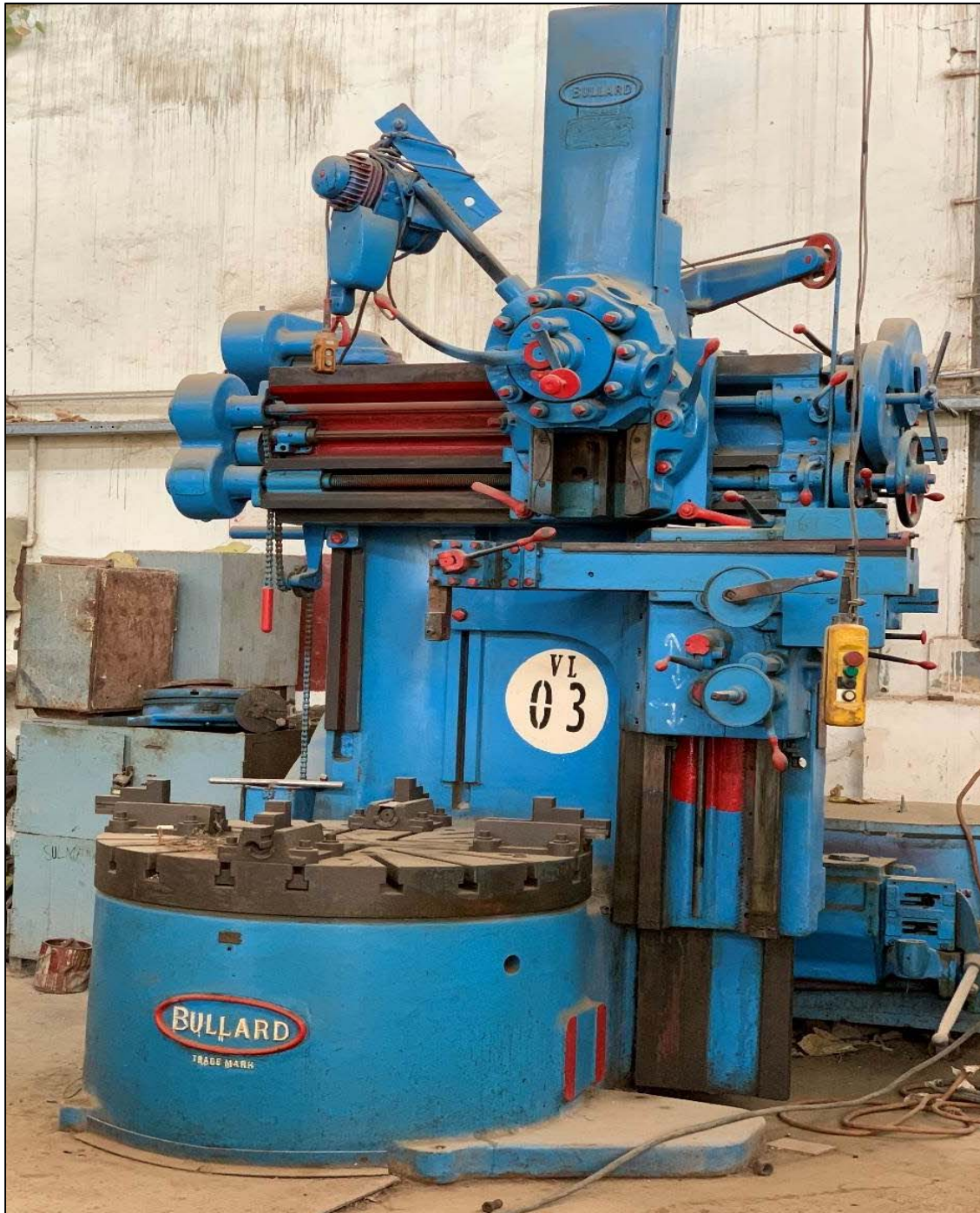
**Length = 9,000 mm**

# Machining Works

## Vertical Lathe Machine

**SWING  $\varnothing$  1450 MM X 760 MM HEIGHT.**

For the turning, Facing and boring a work piece.



# Machining Works

## Vertical Lathe Machine

**SWING  $\varnothing$  1350 MM X 500 MM HEIGHT.**

For the turning, Facing and boring a work piece.



# Machining Works

## Milling Machine

**MOVEMENT X = 400 MM, Y = 300 MM, Z = 750 MM.**



# Machining Works

## Shaper Machine

**MOVEMENT X = 400 MM, Y = 300 MM, Z = 750 MM.**



# Machining Works

## Radial Drill Machine

**Capacity: Hole Dia = 10mm ~ 40mm**  
**Arm Length = 1,200mm ~ 1,800mm**



### **RADIAL DRILL MACHINES**

**Total Quantities = 10 Nos.**  
**Capacity: Hole dia = 10 mm ~ 40 mm**  
**Arm Length = 1,200 mm ~ 1,800 mm**

# Machining Works

## Bending Roller

**MS Plate 3 Rolls Bending Roller**

**3 Rolls Capacity: TH. 25 MM X 2400 LONG X DIA. 1000 MM - 6000 MM**



# Machining Works

## Bending Roller

**MS Plate 4 Rolls Bending Roller**

**TH. 40 MM X 3000 LONG X DIA. 1000 MM - 6000 MM**



# Machining Works

## Bending Roller

### Stainless Steel Bending Roller

Capacity: TH. 12MM X 3000 LONG X DIA. 1000 MM - 2000 MM



# Machining Works

## Horizontal Boring Machine

(14,000 mm x 4,000 mm x 1,500 mm)



# Machining Works

## Horizontal Boring Machine

- MOVEMENT X = 850 MM, Y = 850 MM, Z = 850 MM.



# Machining Works

## Flat Bed Planner

DOUBLE COLUMN 4 TOOL HOLDER SETUP PLANNER

**MOVEMENT X = 4800 MM, Y = 1525 MM, Z = 1525 MM.**



# Machining Works

## Dynamic Balancing Machine

To fulfil the essential requirement of Dynamic Balancing of Rotary parts, ABS has two most modern dynamic balancing machines, having balancing ranges as below:

**Ø2,400 mm x length 3,000 mm x 1 Ton**





## Location - Workshop

F-492, SITE, Karachi - 75700, Pakistan

Tel: +(92-21) 32579174, 32579818

FAX: +(92-21) 32567745

Mobile (PABX): 0300-2010993

E-mail: [info@absengineering.com](mailto:info@absengineering.com)

Website: [www.absengineering.com](http://www.absengineering.com)

